

**Chorley**  
Council

Planning  
Committee Meeting

2 February 2022



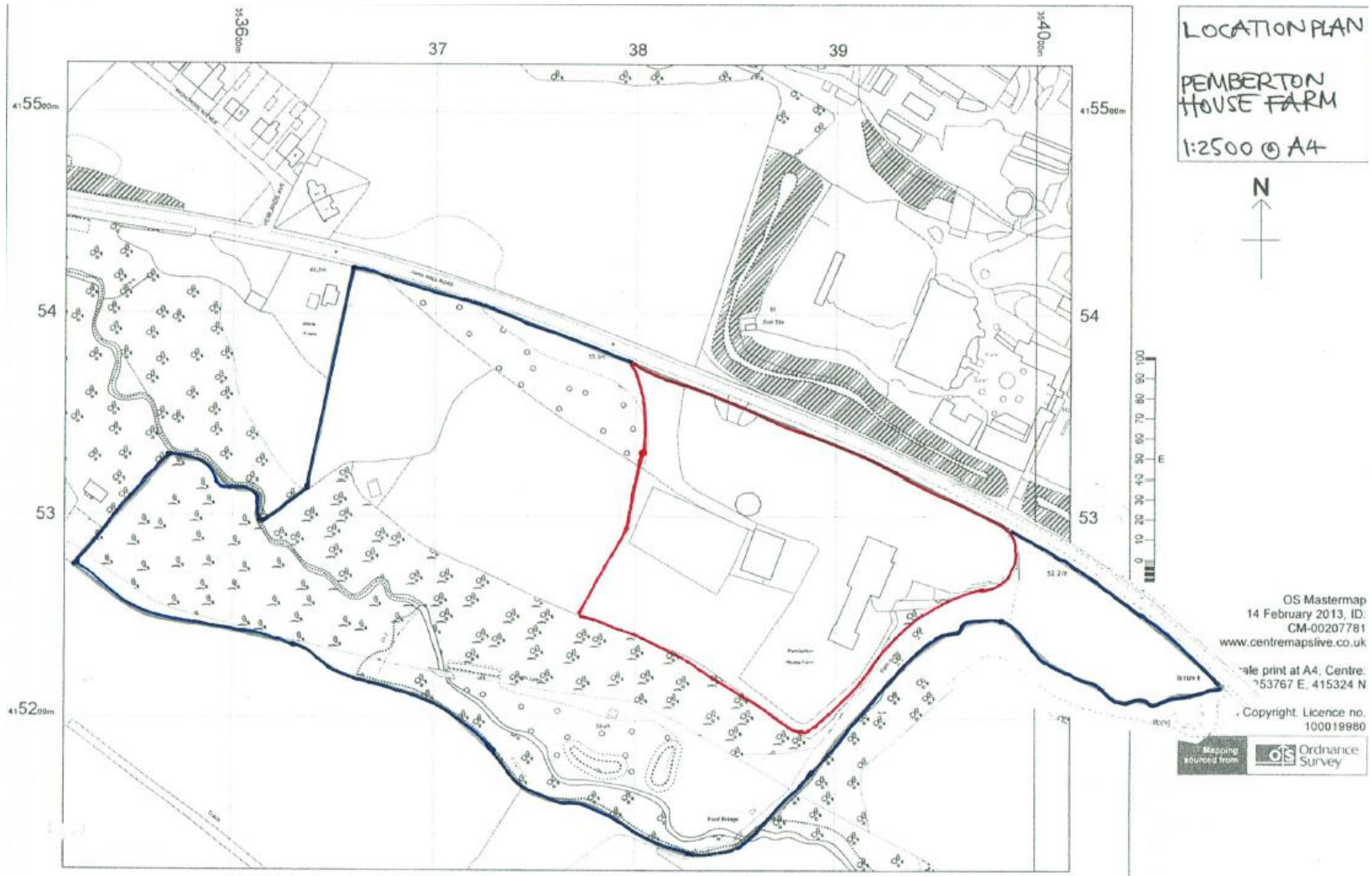
# Item 3f

21/01331/REM

Latvian Consulate, Pemberton House Farm, Park Hall Road,  
Charnock Richard, Chorley

Reserved matters application (details of appearance)  
pursuant to planning application reference 18/00416/OUT  
(Outline application for the erection of 6 detached dwellings  
following demolition of existing dwelling and stables  
including details of access, layout and scale)

# Location plan



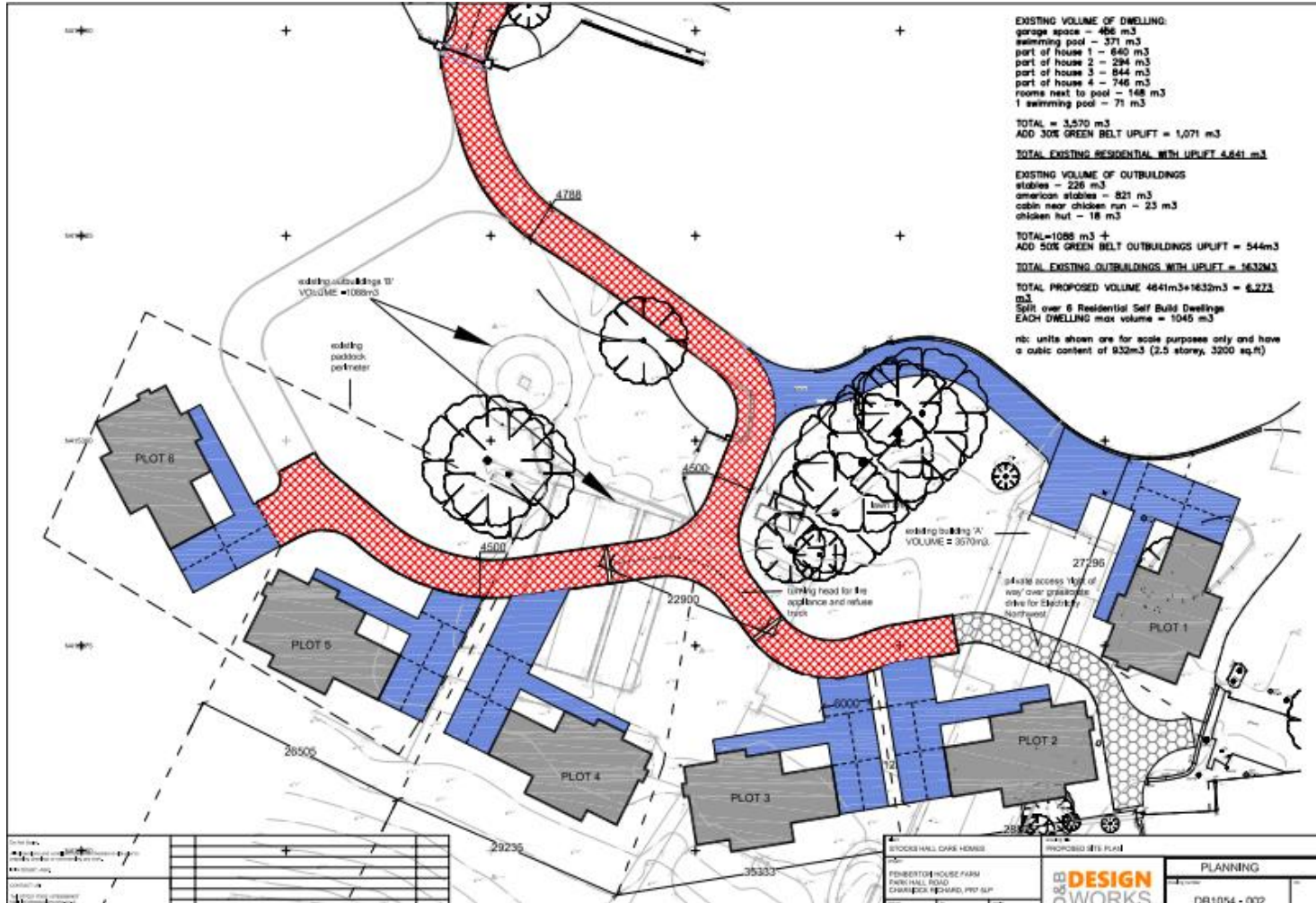


# Aerial Imagery

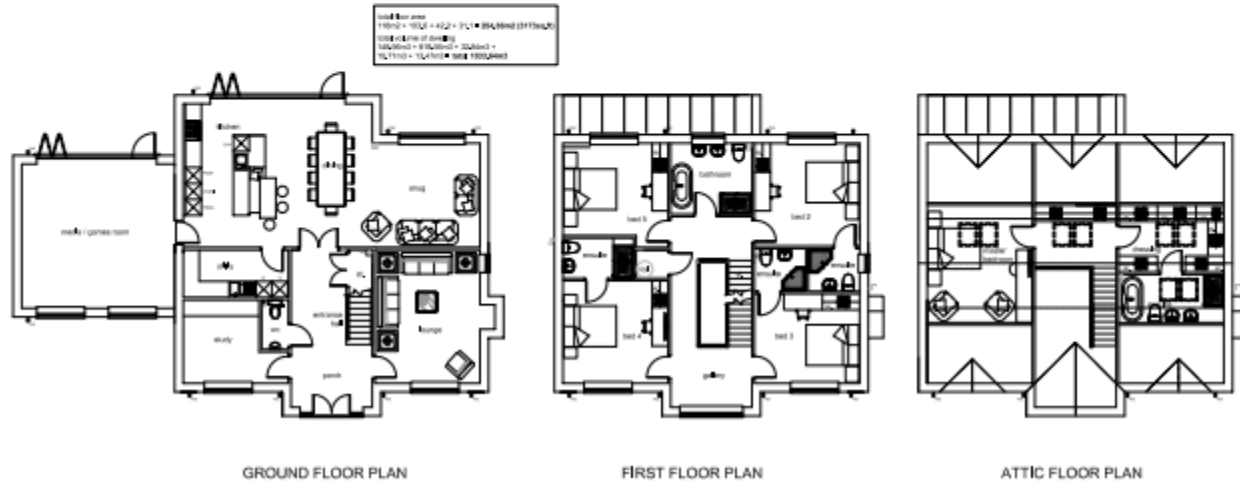
APPLICATION SITE



# Proposed Site Plan

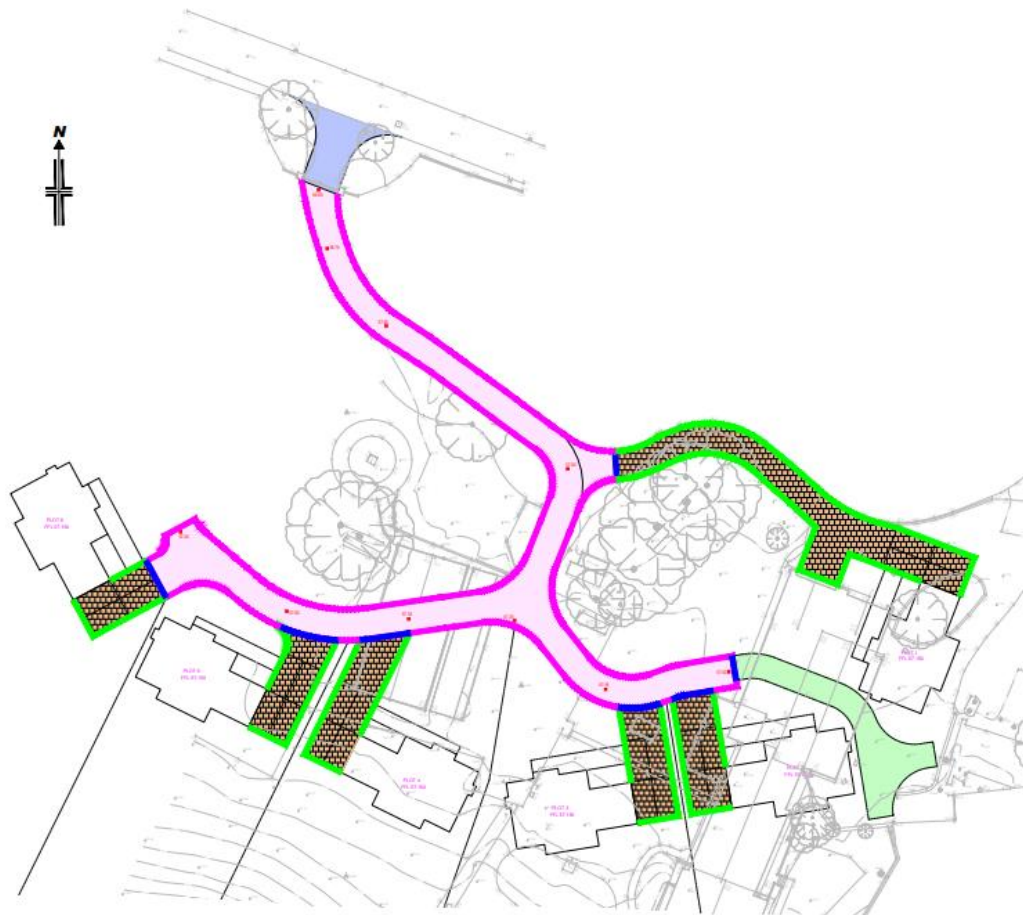


# Proposed Houses






# External Works




## Construction Details Key

### Key: Surfacing Construction Types & Specification

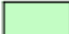
 **Main Junction Road Surfacing (Refer to S278)**

 **Internal Access Road Surfacing (min CBR 5%)**

Surface course - 35mm thick AC10 close surf 10/0/150 pen  
Binder course - 60mm thick AC20 dense bin 100/1150 pen  
Base course - 70mm thick AC32 dense base 100/150 pen  
Sub-base - 225mm thick DoT Type 1

 **Driveways - Porous Block Pavloours (min CBR 5%)**

Surface course - 80mm Block Pavbur  
Laying course - 50mm thick Laying Course -Type 2/6.3 Gc 80/20 in accordance with BS EN 13242:2002  
Geotextile - Geotextile membrane to manufacturers recommendations  
Sub-base - 250mm (min) thick Coarse Grad ed Aggregate - Type 4/20 in accordance with BS EN 13242:2002

 **Grasscrete Access - Specification agreed with Electricity Northwest**

**Landscaping Areas - Refer to Landscaping drawings**

**Access around dwellings (as required) - Paving Flags (600mm x 600mm or similar)**

Surface course - 60mm thick natural concrete paving flags  
Laying course - 25mm thick 3:1 sand cement mortar  
Sub-base - 100mm thick DoT Type II (increased to 200mm in areas susceptible to vehicle over-running)

57.60  


**Proposed Road Level**





# Drainage layout

## Legend

-  Proposed SURFACE WATER Sewer (100Ø U.N.O.)
-  Proposed FOUL Sewer (100Ø U.N.O.)
-  Existing Adopted COMBINED Sewer
-  57.00 Proposed Road Level

